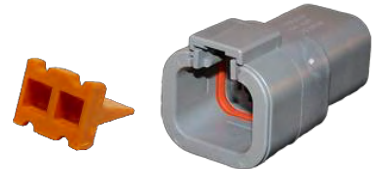


DEUTSCH DTP Series Connectors & Accessories

DTP SERIES MALE PIN POWER CONNECTOR HOUSING



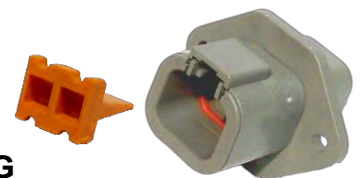
PART NO	DESCRIPTION
HV-DTP04-2P-W	2 Pin Male Pin Power Housing 25 Amp (including wedge)
HV-DTP04-4P-W	4 Pin Male Pin Power Housing 25 Amp (including wedge)

DTP SERIES FEMALE SOCKET POWER CONNECTOR HOUSING



PART NO	DESCRIPTION
HV-DTP06-2S-W	2 Pin Female Socket Power Housing 25 Amp (including wedge)
HV-DTP06-4S-W	4 Pin Female Socket Power Housing 25 Amp (including wedge)

DTP SERIES FLANGE MALE PIN POWER CONNECTOR HOUSING



PART NO	DESCRIPTION
HV-DTP04-4P-L012-W	4 Pin Male Pin Power Housing 25Amp (including wedge)

TERMINALS



PART NO	DESCRIPTION
HV-0460-204-12141	Male Pin Terminal #12 (2.0-3.0mm)
HV-0462-203-12141	Female Socket Terminal #12 (2.0-3.0mm)

REMOVAL TOOL



PART NO	DESCRIPTION
HV-147-6456	Deutsch Wedgeloock Removal Tool

CRIMP TOOL



PART NO	DESCRIPTION
HV-HDT-48-00	Crimping Tool Adjustable to #12 Pins

MOUNTING CLIPS



PART NO	DESCRIPTION
HV-1027-003-1200	Stainless Steel Mounting Clip (DT Deutsch)
HV-300190	Galvanised 90 deg Mounting Clip
HV-1011-026-0205	Plastic DT Mounting Clip (suit all connectors except 8 pin)

BLANKING PLUG



PART NO	DESCRIPTION
HV-114017	Blanking Plug (#16 & #12)