

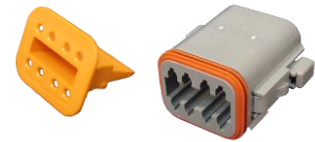
# DEUTSCH DT Series Connectors & Accessories

## DT SERIES MALE PIN HOUSING



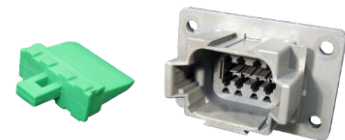
PART NO	DESCRIPTION
HV-DT04-2P-W	2 Pin Male Pin Housing (including wedge)
HV-DT04-3P-W	3 Pin Male Pin Housing (including wedge)
HV-DT04-4P-W	4 Pin Male Pin Housing (including wedge)
HV-DT04-6P-W	6 Pin Male Pin Housing (including wedge)
HV-DT04-08PA-W	8 Pin Male Pin Housing (including wedge)
HV-DT04-12PA-W	12 Pin Male Pin Housing (including wedge)

## DT SERIES FEMALE SOCKET HOUSING

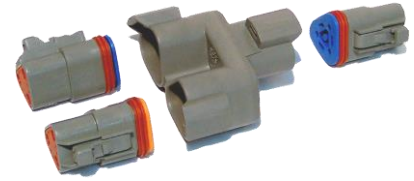


PART NO	DESCRIPTION
HV-DT06-2S-W	2 Pin Female Socket Housing (including wedge)
HV-DT06-3S-W	3 Pin Female Socket Housing (including wedge)
HV-DT06-4S-W	4 Pin Female Socket Housing (including wedge)
HV-DT06-6S-W	6 Pin Female Socket Housing (including wedge)
HV-DT06-08SA-W	8 Pin Female Socket Housing (including wedge)
HV-DT06-12SA-W	12 Pin Female Socket Housing (including wedge)

## DT SERIES FLANGE MALE PIN HOUSING



PART NO	DESCRIPTION
HV-DT04-2P-L012-W	2 Pin Male Pin Housing (including wedge)
HV-DT04-3P-L012-W	3 Pin Male Pin Housing (including wedge)
HV-DT04-4P-L012-W	4 Pin Male Pin Housing (including wedge)
HV-DT04-08PA-L012-W	8 Pin Male Pin Housing (including wedge)
HV-DT04-12PA-L012-W	12 Pin Male Pin Housing (including wedge)



### DT SERIES 'Y' CONNECTOR (DATA BUS)

PART NO	DESCRIPTION
HV-DT04-3P-P007	3 Pin Male Pin 'Y' Connector Housing (Data Bus)
HV-W3S-1939	3 Pin Female Blue Wedge Lock (suits DT04-3P-P007 Connector above only)  <b>Note: 2 required per connector</b>
HV-DT06-3S-W	3 Pin Female Socket Housing (including wedge)  <b>Note: 3 required per connector</b>

### DT SERIES WEDGE LOCKS FOR MALE PIN HOUSING



PART NO	DESCRIPTION
HV-W2-P	2 Pin Wedge Lock
HV-W3-P	3 Pin Wedge Lock
HV-W4-P	4 Pin Wedge Lock
HV-W6-P	6 Pin Wedge Lock
HV-W8-P	8 Pin Wedge Lock
HV-W12-P	12 Pin Wedge Lock

### DT SERIES WEDGE LOCKS FOR FEMALE SOCKET HOUSING



PART NO	DESCRIPTION
HV-W2-S	2 Pin Wedge Lock
HV-W3-S	3 Pin Wedge Lock
HV-W4-S	4 Pin Wedge Lock
HV-W6-S	6 Pin Wedge Lock
HV-W8-S	8 Pin Wedge Lock
HV-W12-S	12 Pin Wedge Lock



**DT SERIES CONTACTS (Nickel)**

PART NO	DESCRIPTION
HV-0460-202-16141	Male Pin Contact (suit 0.5mm <sup>2</sup> -1.0mm <sup>2</sup> Wire)
HV-0462-201-16141	Female Socket Contact (suit 0.5mm <sup>2</sup> -1.0mm <sup>2</sup> Wire)
HV-0460-215-16141	Male Pin Contact (suit 1.0mm <sup>2</sup> -2.5mm <sup>2</sup> Wire) Green Band
HV-0462-209-16141	Female Socket Contact (suit 1.0mm <sup>2</sup> -2.5mm <sup>2</sup> Wire) Green Band



**DT SERIES CONTACTS (Gold Plated)**

PART NO	DESCRIPTION
HV-0460-202-1631	Gold Plated Male Pin Contact (suit 0.5mm <sup>2</sup> -1.0mm <sup>2</sup> Wire)
HV-0462-201-1631	Gold Plated Female Socket Contact (suit 0.5mm <sup>2</sup> -1.0mm <sup>2</sup> Wire)
HV-0460-215-1631	Gold Plated Male Pin Contact (suit 1.0mm <sup>2</sup> -2.5mm <sup>2</sup> Wire) Green Band
HV-0462-209-1631	Gold Plated Female Socket Contact (suit 1.0mm <sup>2</sup> -2.5mm <sup>2</sup> Wire) Green Band



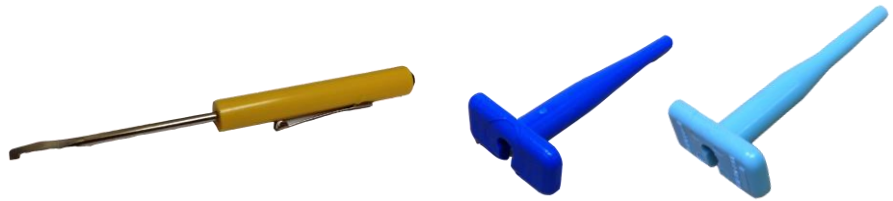
**DIODE WITH DT SERIES 2 PIN CONNECTION**

PART NO	DESCRIPTION
HV-DT04-2P-RT02	3Amp 400V Diode (with DT Series 2 Pin Connection)

**JIFFY SPLICE**



PART NO	DESCRIPTION
HV-JS-16-00	#16 Jiffy Splice



**REMOVAL TOOLS**

PART NO	DESCRIPTION
HV-0411-204-1605	#16 Removal Tool (Dark Blue)
HV-0411-310-1605	#16 Removal Tool (Light Blue)
HV-147-6456	Deutsch Wedgelock Removal Tool



**CRIMP TOOLS**

PART NO	DESCRIPTION
HV-24-466	Tool, #16 Deutsch Crimp (Red Handle)
HV-AMSC16/A-1	Tool, #16 Deutsch Crimp (Green Handle)
HV-HDT-48-00	Crimping Tool Adjustable to #12 Pins



**MOUNTING CLIPS**

PART NO	DESCRIPTION
HV-1027-003-1200	Stainless Steel Mounting Clip (DT Deutsch)
HV-300190	Galvanised 90 deg Mounting Clip
HV-1011-026-0205	Plastic DT Mounting Clip (suit all connectors except 8 pin)
HV-1011-027-0805	Plastic DT Mounting Clip (suit 8 pin connectors only)



**BLANKING PLUG**

PART NO	DESCRIPTION
HV-114017	Blanking Plug (#16 & #12)

### DT SERIES BOOTS (for MALE CONNECTORS)



PART NO	DESCRIPTION
HV-DT2P-BT120	2 Pin Deutsch Male Boot
HV-DT3P-BT120	3 Pin Deutsch Male Boot
HV-DT4P-BT120	4 Pin Deutsch Male Boot
HV-DT6P-BT120	6 Pin Deutsch Male Boot
HV-DT8P-BT120	8 Pin Deutsch Male Boot
HV-DT12P-BT120	12 Pin Deutsch Male Boot

### DT SERIES BOOTS (for FEMALE CONNECTORS)



PART NO	DESCRIPTION
HV-DT2S-BT120	2 Pin Deutsch Female Boot
HV-DT3S-BT120	3 Pin Deutsch Female Boot
HV-DT4S-BT120	4 Pin Deutsch Female Boot
HV-DT6S-BT120	6 Pin Deutsch Female Boot
HV-DT8S-BT120	8 Pin Deutsch Female Boot
HV-DT12S-BT120	12 Pin Deutsch Female Boot

### DT SERIES CONNECTOR KITS

PART NO	DESCRIPTION
HV-CKDT-500	DT Series Connector Kit (no crimping tool)

#### Kit Includes:

- 6 x 2 Pin Male & Female Housing
- 6 x 3 Pin Male & Female Housing
- 6 x 4 Pin Male & Female Housing
- 6 x 6 Pin Male & Female Housing
- 6 x 8 Pin Male & Female Housing
- 6 x 12 Pin Male & Female Housing
- 30 x Blanking Plugs #16
- 150 x Male Pin Terminal (Green Band)
- 150 x Female Socket Terminal (Green Band)



## DT SERIES TEST EQUIPMENT

PART NO	DESCRIPTION
HV-HTDT-101	Harness Check Kit (Deutsch DT Series)

### Kit Includes:

- Harness Check with 12 Pin Connectors
- 2, 3, 4, 6 & 8 Pin Adaptor Harnesses
- Multimeter Leads
- Durable Weather Proof Pelican Case
- Instructions

